

SLAU

Automatic L-Sealer and Shrink Tunnel *Outstanding Performance in Automatic Shrink Packaging*

UP TO
40
Packs per min.



SLAU 50/50 with TNL-TR45/90
Infeed and Outfeed Conveyor Optional

STRATEGIC GROUP[®]
PACK FASTER, PACK SMARTER

 **ROCHMAN**

SLAU 50/50 - 60/80

More Standard Features and More Flexibility...The Natural Choice



SLAU Shrink wrappers are built to the highest standard, ensuring continuous reliability.

All SLAU Machines Include:

- Safety guards.
- Special safety devices on the sealing jaw.
- Sealing jaw height adjustable to 3 positions.
- Adjustable width infeed conveyor.
- Waste film collection with adjustable tension.

SLAU DIMENSIONS

SLAU 50 / 50	78"L x 43"W x 67"H
SLAU 80 / 60	98"L x 47"W x 67"H

Sealing Dimensions	SLAU 50/50	SLAU 60/80
Max Product size (LxWxH)	20" x 20" x 7"	23" x 21" x 7"
Production speeds	40 packs/min.	30 packs/min.
Vertical and horizontal pack detection	<input type="radio"/>	<input type="radio"/>
Variable speed conveyor	<input type="radio"/>	<input type="radio"/>
3-position height adjustable sealing jaw	<input type="radio"/>	<input type="radio"/>
Closing conveyor (vital for wrapping small packs)	<input type="radio"/>	<input type="radio"/>
Electrical requirements	220v / 3ph / 15Amps	220v / 3ph / 15Amps
Compressed air	87 p.s.i. at 8.83 c.f.m	87 p.s.i. at 8.83 c.f.m
Stainless steel	<input type="checkbox"/>	<input type="checkbox"/>
Infeed motorized conveyor	<input type="checkbox"/>	<input type="checkbox"/>
Outfeed exit roller	<input type="checkbox"/>	<input type="checkbox"/>



Standard Optional



**Recommended Shrink Tunnel
for SLAU 50/50**

Model: **TR-45/90 H-250**

Shrink chamber dimensions:

37"L x 17"W x 10"H

Distance between rollers: 3/4"

Electrical requirements:

220v / 3ph / 31Amps

Machine dimensions:

67"L x 42"W x 65"H

**Recommended Shrink Tunnel
for SLAU 80/60**

Model: **TR-65/100 H-250**

Shrink chamber dimensions:

41"L x 25"W x 10"H

Distance between rollers: 3/4"

Electrical requirements:

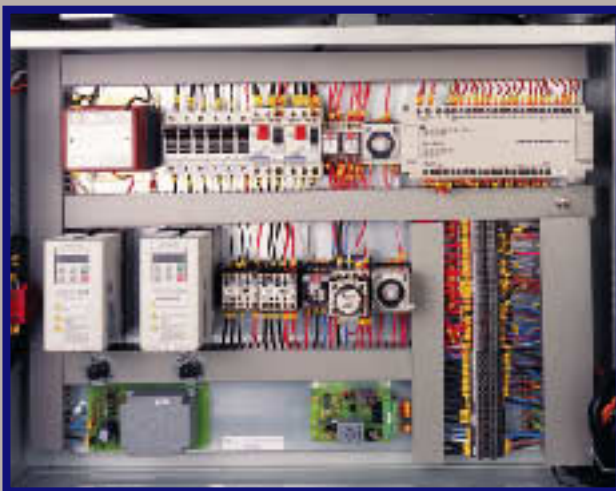
220v / 3ph / 49 Amps

Machine dimensions:

71"L x 49"W x 65"H



3-position height adjustable sealing jaw



Electrical cabinet



Adjustable mechanical film perforator

SLAU Automatic L-Sealer and Shrink Tunnel
*Outstanding performance with more standard features
and more flexibility. The natural choice...*



Free testing of your products

Send samples of your desired shrink packaging application and Strategic Group will ensure that the SLAU automatic L-sealer will meet your production packaging goals.



254 W. Airport Frwy. Irving
TX 75062-6322
Tel: **972-438-2995**
Fax: **972-438-2876**
www.sgroup.org
e-mail: info@sgroup.org

Manufactured by:

